

PRE-ELEC® electrically conductive plastics Materials for ESD Boxes and Pallets

The rising need for complex electronic components, such as those in electric cars, creates a demand for protective packaging materials for storage and transportation. ESD boxes and pallets protect fragile electronic components from unintended electrostatic discharges and mechanical incidents.



Injection molded **ESD boxes, bins, and cases** made of PRE-ELEC® materials can be used for rigid ESD packaging for storing and transporting electronic components. Boxes can be lined with electrically conductive foams and divided into compartments with electrically conductive sheets.

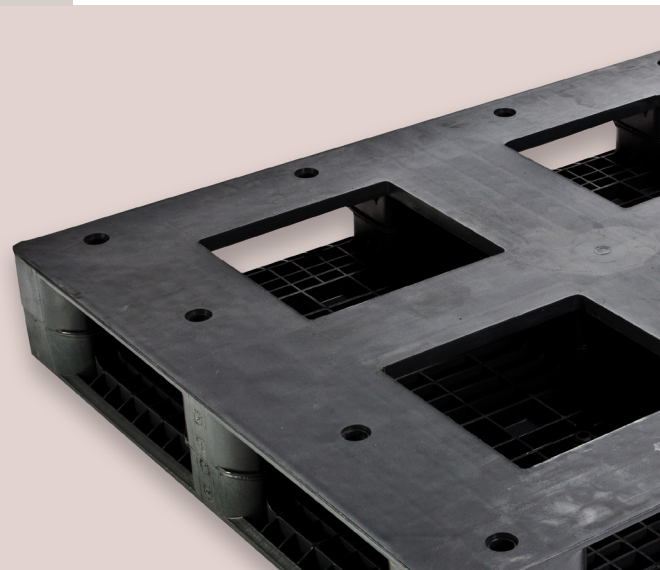
*Specifically designed **wafer carriers** help protect silicon wafers from ESD incidents.*

Wafer carrier materials need to be electrically conductive to protect from ESD and dust, wear-resistant, and have dimensional stability. They must be reusable and recyclable.

Find product data at
[premixgroup.com](https://www.premixgroup.com/data-center)
/data-center



Injection molded **ESD pallets** made out of PRE-ELEC® materials can be used for ESD component transportation and storage.



Our PRE-ELEC® compounds have high and durable conductivity and excellent dispersion. They are easy to process, recyclable, and resist wear and tear very well. Boxes and pallets made of electrically conductive plastics do not emit dust, do not absorb moisture, and have excellent impact resistance.